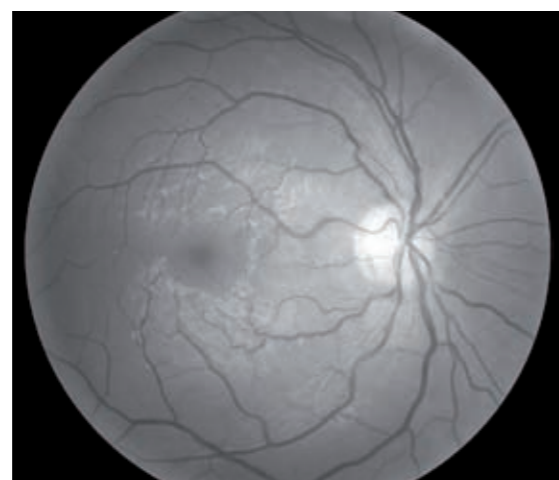


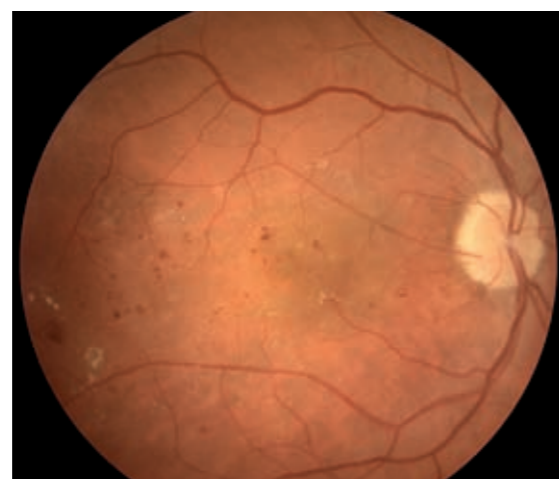
PHOTO OF YOUNG HEALTHY RETINA



RED-FREE PHOTO OF HEALTHY RETINA



DETAIL OF THE OPTIC DISK



RETINA OF DIABETIC PATIENT



PERIPHERAL FIELDS



PERIPHERAL FIELDS



CenterVue belongs to the M31 Group of technology companies. CenterVue was incorporated through a concerted action of M31 and a team of professionals with extensive experience in the healthcare industry, skilled in product design and development and possessing a spirit of discovery and creativity. CenterVue develops leading-edge diagnostic systems and promotes the establishment of screening programs aimed at preventing serious and prevalent diseases. Early detection allows clinicians to better control the evolution of many progressive diseases, thus improving the quality of life of the patient.

Visit www.centervue.com to know more.



The **Eye Knowledge Network** is an online service specifically conceived for eyecare professionals to find, share and discuss clinically relevant ophthalmic information in the form of data, images and videos. The platform is structured as a virtual meeting place and knowledge sharing tool and it connects users in a professional network.

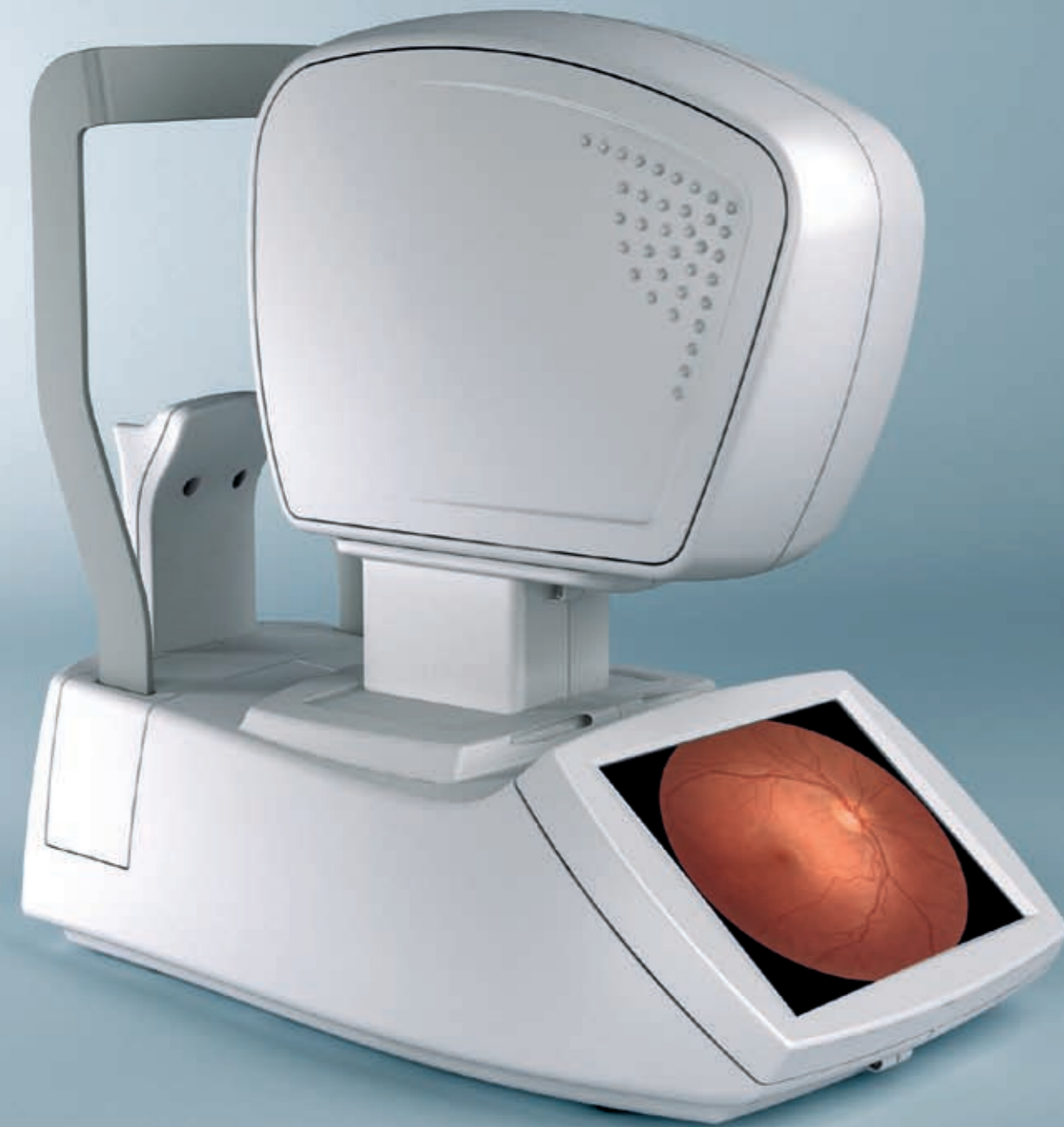
Visit www.eyeknowledge.net to know more.

REV.02-10/0950 - Subject to change without notice for improvement

drs
Digital Retinography System



A new technology for retinal assessment.



presenting DRS

DRS is the new frontier of non-mydratic, digital retinal imaging. Thanks to its fully automated operation, DRS requires minimal operator training. Its compact, ergonomic design and low power flash help ensure patient comfort. DRS is conceived to maximize patients flow and it is entirely operated through its intuitive touch-screen interface. It supports single- or multi- field acquisition protocols, providing seven different, standardized, 45° fields. DRS senses the patient, self-aligns to the target eye, focuses the retina, adjusts the flash level and captures the image in less than 30 seconds.

Benefits

- Extreme ease of use: patient auto-sensing, auto-alignment, auto-focus, auto flash adjustment, auto-capture
- Compact & clean design
- Short exam time: captures both eyes in 1' (single field)
- High quality images
- Multiple fields acquisition
- Minimal training required
- No additional PC required
- Touch-screen operation
- Internet-native

technical specifications

Retinal Imaging

- Field of view: 45° x 40°
- Non mydratic operation (4.0 mm minimum pupil size)
- Fixation target: 7 internal LEDs
- Operating distance: 37 mm
- Sensor size: 5 MPixel (2592x1944)
- Sensor resolution: 48 pixels/deg

Dimensions

- Weight: 19 Kg (42 lbs)
- Size: 58 x 55 x 33 cm (23' x 22' x 13')

Other features

- Patient presence sensor
- Motorized chin-rest
- Automatic alignment using two pupil cameras
- Auto-focus (adjustment range -15D to +15D)
- Auto-flash level adjustment
- Low power flash
- 10.4" touch-screen color display
- Embedded PC (160 GB hard disk)
- Wi-Fi and Ethernet connectivity

Accessories

- Power cord, spare fuses, dust cover

